

PART TWO: CONVERGENCE AND THE FUTURE OF HEALTHCARE ECOSYSTEM

汇合与交融：新的医疗生态系统

Chris McQuillan, Principal, Director of Healthcare,
North America and Middle East North Africa, B+H
北美、中东及北非地区医疗总监，合伙人



**INDEED, PEOPLE'S WANTS AND NEEDS CONTINUE
TO EVOLVE... 人们的需求持续改变?**

... SO HOW CAN WE PREDICT WHERE THE **FUTURE
OF **HEALTHCARE** IS HEADED?
我们如何预测医疗的未来走向?**



HEALTHCARE AS COMMUNITY ANCHOR

医疗作为社区的核心

Solutions for the future of healthcare must respond to human, technological and economic ecosystems – ecosystems that are ever-changing and speak to all aspects of **life and community**.

未来医疗解决方案必须适应不断变化的人、技术和经济生态系统，并融入人们生活和社区的各个层面。



LIVE 生活

Combine multigenerational living, economic status and mixed use to create whole communities and promote wellness

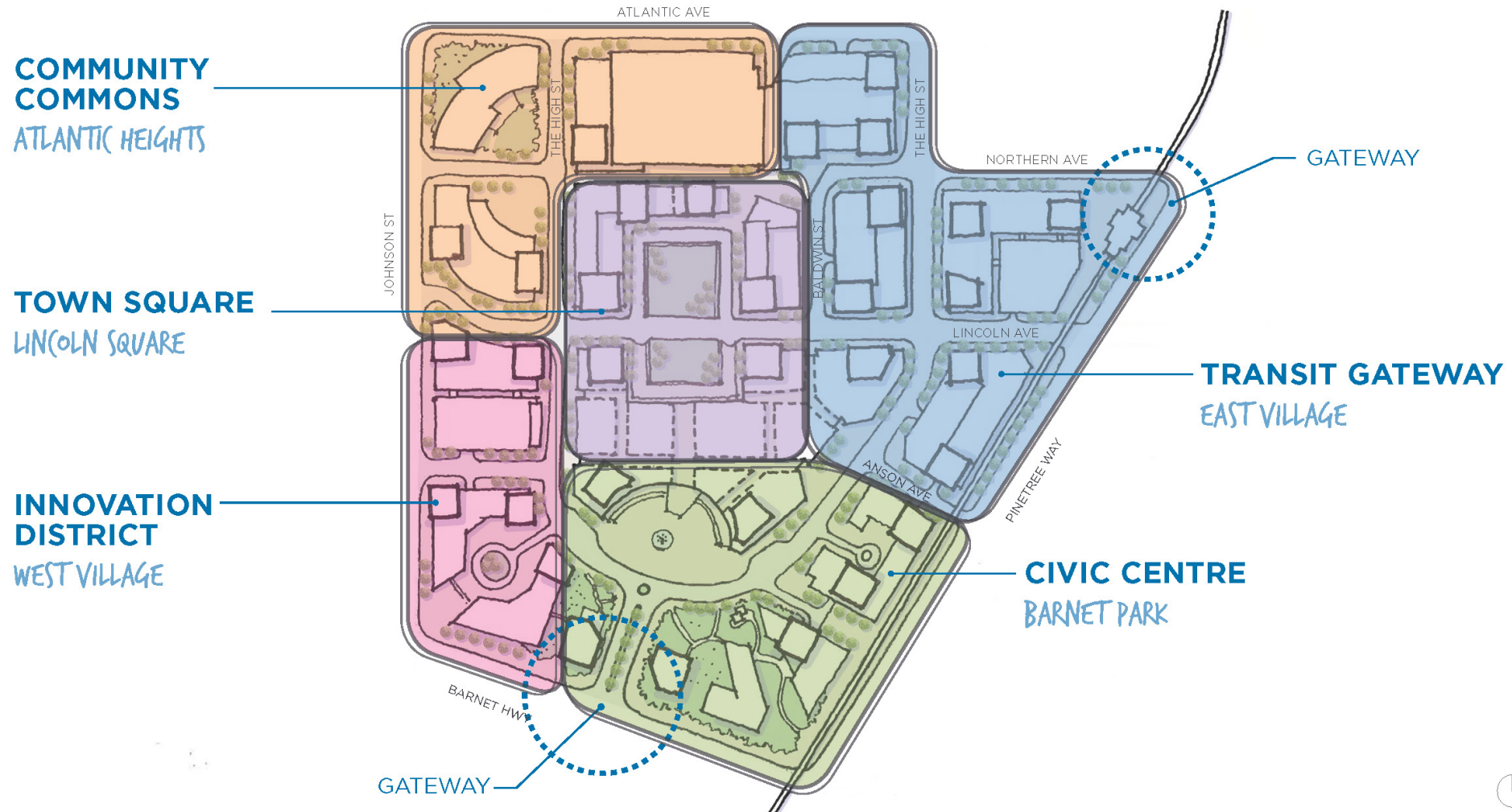
包容各个年龄层、不同收入人群的多业态综合开发，打造完整社区，推动身心健康

Coquitlam Centre Mixed-Use Development
Master Plan
Coquitlam中心综合体开发总体规划

British Columbia, Canada
加拿大不列颠哥伦比亚省



NEIGHBOURHOODS



PLAY

娱乐

Integrating social activators into the
healthcare experience
将社会活跃度融入到医疗体验中

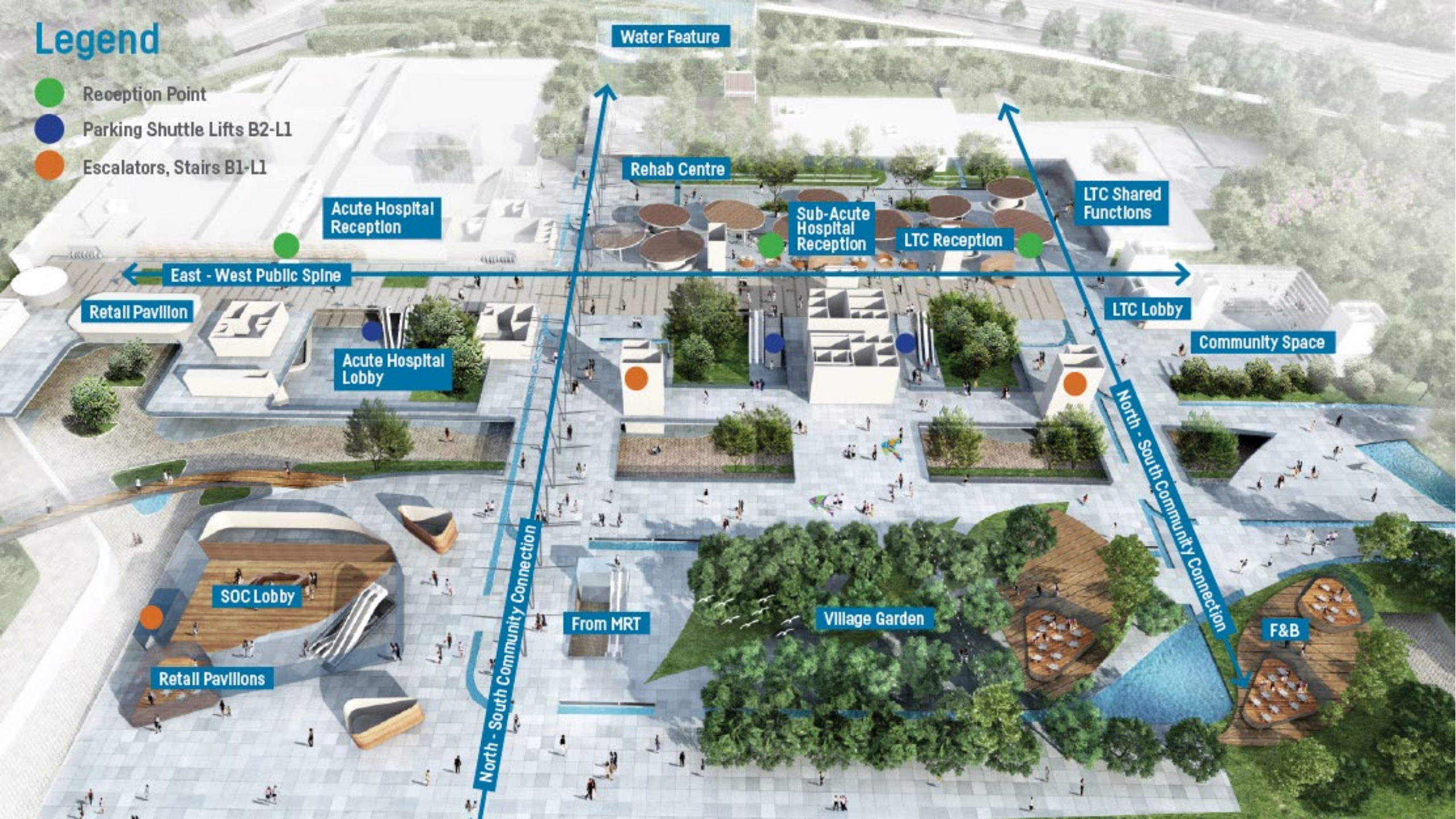
Woodlands Integrated Healthcare Campus
(Design Competition Entry)
Woodlands综合医疗园区 (设计竞赛)

SINGAPORE
新加坡



Legend

- Reception Point
- Parking Shuttle Lifts B2-L1
- Escalators, Stairs B1-L1



TREAT

治疗

Give new form and combine functions
to create new healthcare buildings
beyond the hospital

打造新的格局，结合不同的功能，创造医
疗综合大楼

Milton District Hospital
Milton社区医院

Milton, Canada
加拿大Milton





LEARN

学习

Porus Healthcare Environments:
Blurring the Lines Between Research,
Learning, Practice and Healing
多孔式医疗环境：模糊研究、学习、实践
和治疗之间的界限

National University Centre for Oral Health
Singapore (NUCOHS)新加坡国立大学口腔医
学中心

SINGAPORE
新加坡

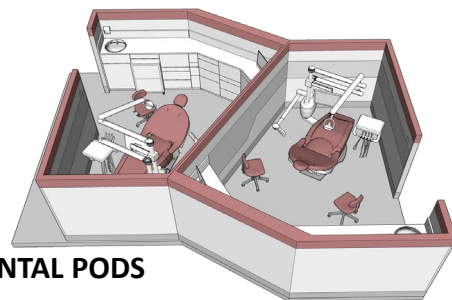


ENVIRONMENTS THAT FOSTER COLLABORATION

促进协作的环境



TUTORIAL ROOMS



DENTAL PODS



STUDENT/ TEACHING LABS



Open operatory pods are mixed on the same level as tutorial and break-out rooms to encourage accidental encounters among students and create spontaneous opportunities for knowledge exchange.



WORK 工作

Caring for the Caregivers: The Future of the Healthcare Workplace
关爱医护人员：医疗工作场所的未来

SickKids Hospital Patient Support Centre
儿童医院病人辅助中心

TORONTO, CANADA
加拿大多伦多

A DATA-DRIVEN APPROACH

WORKSHOP ACTIVITIES



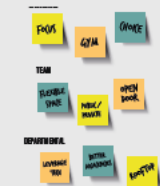
CULTURE CARDS

Out of a deck of 81 cards containing a variety of imagery, participants selected 3 cards that resonate with the current state, and 3 cards about the preferred future state.



FOUR CULTURES

Cameron & Quinn developed a well-established theory that there are four basic cultural traits of organizations to varying degrees. Participants defined where SickKids is within the quadrant and where they would like the culture to be.



BEHAVIOURS BRAINSTORMING

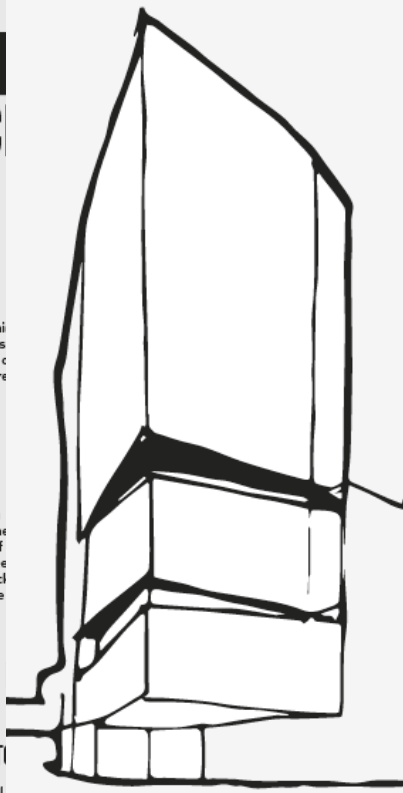
Teams discussed more tactical elements of culture, and categorized future state features in terms of their application to individual, team, and departmental levels of experience.



SPACE TYPE ZONING

Teams positioned space type categories in a hypothetical workspace based on a given workforce profile.

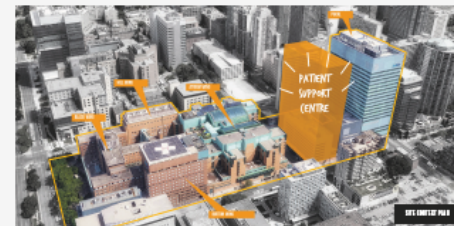
The purpose of this activity was to introduce the space type concept to participants and to gain initial feedback from staff about space types important to them.



TRANSFORMING MODELS OF HEALTHCARE WORKPLACE DESIGN

The new SickKids Patient Support Centre (PSC) is the first phase of Project Horizon – the SickKids campus redevelopment plan which aims to build an inspired, re-imagined hospital of the future. Housing education, simulation and core administrative services in a modern, technology-enabled and sustainable building, the PSC will establish a critical link between clinical care, learning and discovery across the SickKids campus.

Setting a new precedent in workplace design to support integrated health-care delivery, the new PSC will be a transformational catalyst for the way SickKids works, intended to nurture and empower the organization's talent base by inspiring collaboration and innovation. The approximately 22-storey tower will be a vessel for realizing SickKids' preferred culture and its connection to community.

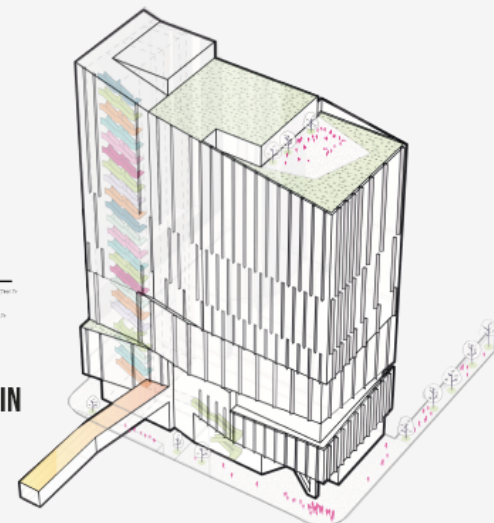


WORKSPACE FLOOR PLAN



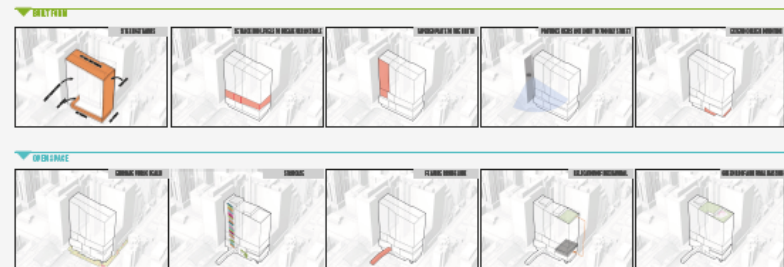
“DESIGNING FROM OUTSIDE IN AND INSIDE OUT.”

- MATTHEW FEUER, SENIOR DESIGN PRINCIPAL



Firmly anchored in the City it serves, the first-floor atrium will blur the boundary between indoors and outdoors to become a rich social hub, accessible to the public – a place that transcends disciplines and divisions where staff, patients, visitors and the public can convene and gather in a communal space.

Integrating the centre into the fabric of the surrounding community will contribute a world-class example of health and well-being as the heart of the community, a further embodiment of the SickKids mission to heal, educate and nurture healthy children and communities.





HEAL

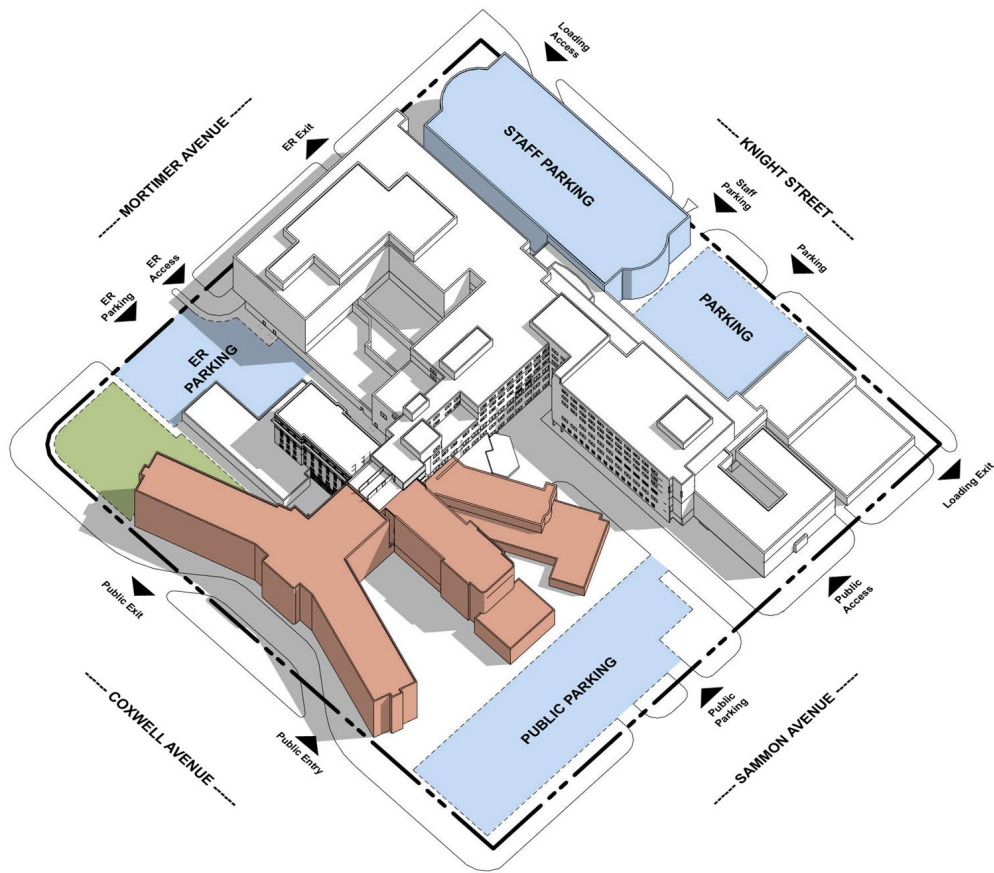
康复

Social Health: The role of the hospital as a
Community Anchor

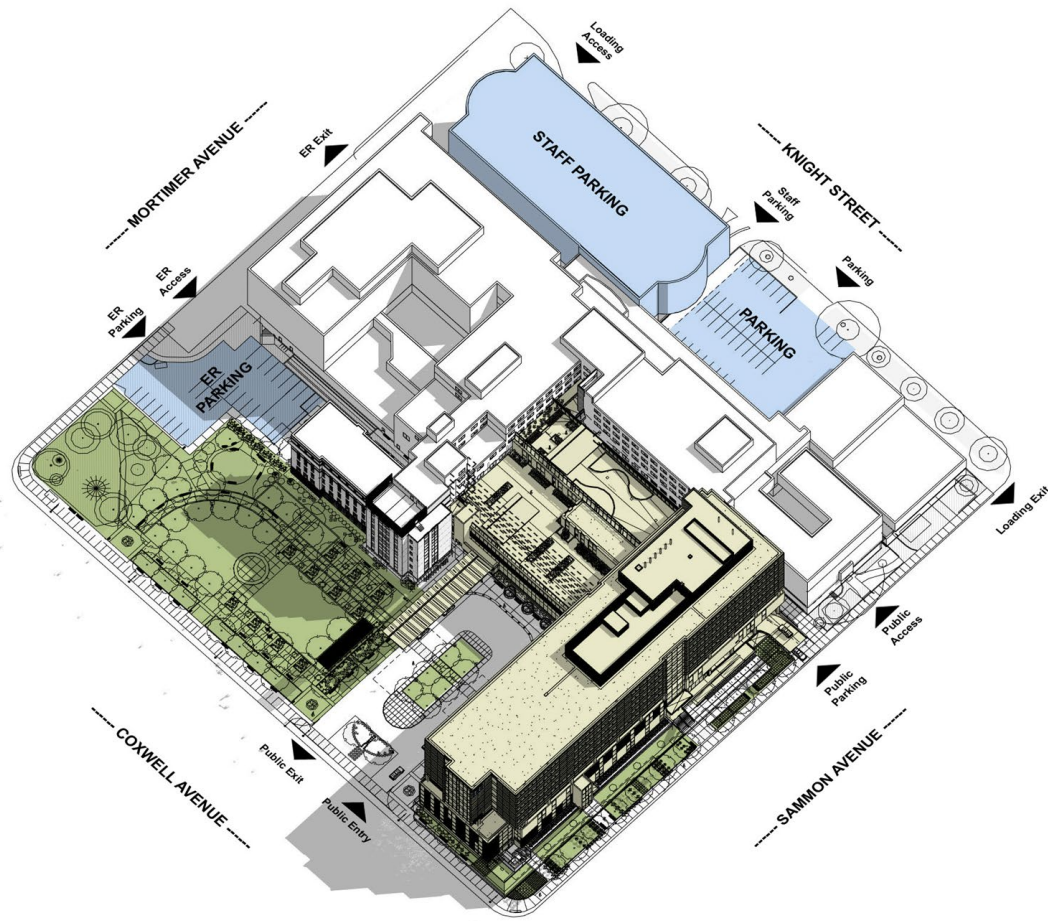
社会健康：医院作为社区主力的职责

Michael Garron Hospital
TORONTO, CANADA
加拿大多伦多





Site Plan Overview: Current State
 总平面：目前状态



Site Plan Overview: Future State
 总平面：未来



STAY

居住

Destination Hospitals: The
New Hotels
目的地医院：新酒店

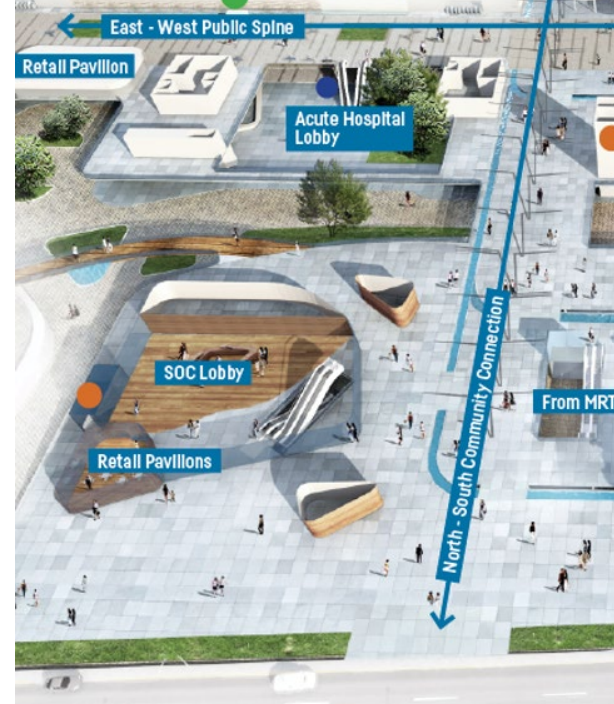
Grenada Hospital & Wellness
Centre
格林纳达医院和健康中心

GRENADA
格林纳达



**THE FUTURE HEALTHCARE ECOSYSTEM IS
IS A HOLISTIC ECOSYSTEM...**

未来的医疗生态系统是一个整体生态系统.....



**LET'S WORK TOGETHER TO FIND HOLISTIC SOLUTIONS
TO SUPPORT PEOPLE AND COMMUNITIES.**
让我们共同努力寻找支持人和社区的整体解决方案。

B+H | BOLD + human

bharchitects.com